



SCAN TO DOWNLOAD
MOBILE APP
CAPTURE ADVANCE CMS



FEATURED PRODUCTS

Video Surveillance Solutions



Visit Capture Advance Online







For Capture Advance tech support, please contact:
info@captureadvtech.com or
call 833-553-7060/800-583-6470

For more information about Capture Cloud,
please refer to the **Eagle Eye User Guide** or
call 512-301-9710



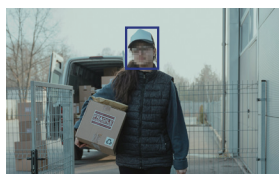
NETWORK CAMERA (SUPPORTS CAPTURE CLOUD SERVICE)

AI Camera

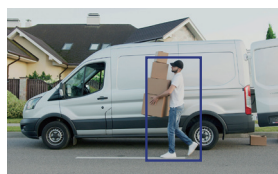
8MP, 2.8MM FIXED LENS			5MP, 2.8MM FIXED LENS			5MP, 2.7-13.5MM MOTORIZED LENS		
R2-8MPFXBUL	R2-8MPFXDOME	R2-8MPFXTUR	R2-5MPFXBUL	R2-5MPFXDOME	R2-5MPFXTUR	R2-5MPBLMTRZ	R2-5MPDMTRZ	R2-5MPTRMTRZ
								
Edge AI	Edge AI	Edge AI Built-in Mic	Edge AI	Edge AI	Edge AI Built-in Mic	Edge AI	Edge AI	Edge AI Built-in Mic

SUPPORTS MICRO SD CARD (UP TO 256GB), TRUE WDR, AI, IVS, AUDIO, ALARM

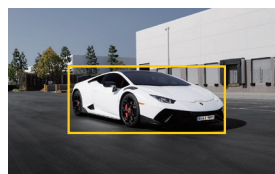
AI Functions



Face

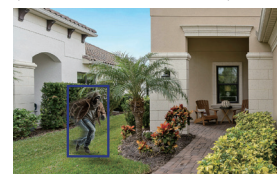


Human

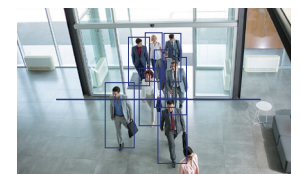


Vehicle

SMD (Smart Motion Detection)



People Counting



Smart Events



Intrusion



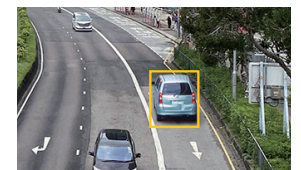
Single Line Crossing



Double Line Crossing



Loitering



Wrong-way

Full-color



- Full-color
- Edge AI
- Built-in Mic

R2-IP4MPFLCR

4MP, 1/1.8" SENSOR, 2.8mm Fixed Lens, SUPPORTS MICRO SD CARD (UP TO 256GB), TRUE WDR, AI, IVS, AUDIO, ALARM

F1.0 Large Aperture

4x more incoming light than F2.0



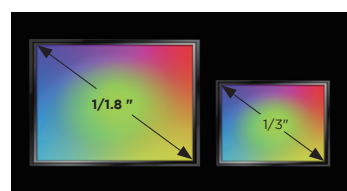
24/7 Colorful Imaging

Superior color and clarity in low light



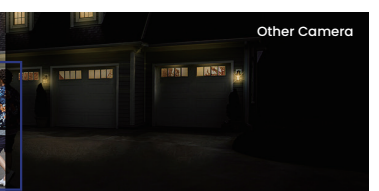
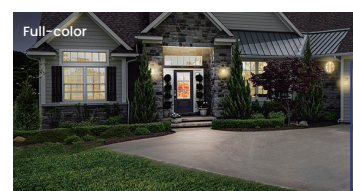
1/1.8" Large Sensor

1.8x larger sensing area than 1/3" sensor





Energy Savings

Minimizes dependence on supplementary lighting





NVR

64-CH NVR

NON-POE	POE
R2-64CHNOPOE	R2-64CHPOE
	
Non-POE NVR EIGHT SATA NO HDD INCLUDED	16-CH POE NVR EIGHT SATA NO HDD INCLUDED

POE NVR

HDD INCLUDED				NO HDD INCLUDED
R2-NVR4C2TB	R2-NVR8C2TB	R2-NVR16C2TB	R2-NVR16C4TB	R2-32CHNVR
				
4-CH POE NVR ONE SATA 2TB HDD INCLUDED	8-CH POE NVR TWO SATA 2TB HDD INCLUDED	16-CH POE NVR TWO SATA 2TB HDD INCLUDED	16-CH POE NVR TWO SATA 4TB HDD INCLUDED	32-CH POE NVR FOUR SATA NO HDD INCLUDED

Ultra HD Video



Intelligent Applications



Spot Monitoring



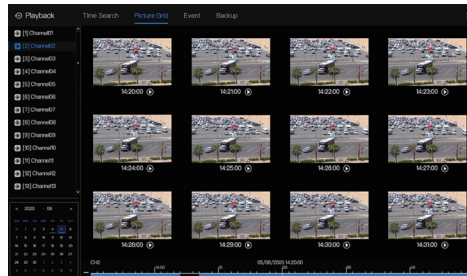
Fisheye Dewarping & ePTZ

R2-32CHNVR
R2-64CHNOPOE
R2-64CHPOE



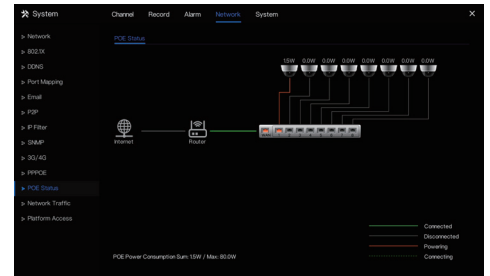
Picture Grid

Quickly identify events



PoE Status

Convenient troubleshooting



ANALOG

HD CAMERA

5MP, 2.8MM LENS			5MP, 2.8-12MM LENS			2MP, 2.8MM LENS	
R2-HD5MPBLT	R2-HD5MPDME	R2-HD5MPEYE	R2-HD5MPMOBT	R2-HD5MPMODM	R2-HD5MPMOEY	R2-HD2MPBUL2	R2-HD2MPEYE
							
SUPPORTS CVI/TVI/AHD/CVBS, UTC & JOYSTICK CONTROLLABLE OSD							

HYBRID DVR


R2-HDDVR4C2T	R2-HDDVR8C2T	R2-HDVR16C2T
		
4-CH DVR 4-CH HD + 2-CH IP ONE SATA 2TB HDD INCLUDED	8-CH DVR 8-CH HD + 4-CH IP TWO SATA 2TB HDD INCLUDED	16-CH DVR 16-CH HD + 8-CH IP TWO SATA 2TB HDD INCLUDED
SUPPORTS HD CAMERAS UP TO 5MP, P2P CONNECTION SUPPORTS HDD UP TO 8TB, SUPPORTS HDMI AND VGA OUTPUT SUPPORTS AHD, TVI, CVI, CVBS, IP VIDEO INPUTS		

KIT

NVR KIT

R2-IP8C5MPK	R2-IP16C5MPK	R2-IP8CFCLK
 	 	  
1 x 8-CH NVR 6 x 5MP FIXED TURRET 2TB HDD INCLUDED	1 x 16-CH NVR 12 x 5MP FIXED TURRET 4TB HDD INCLUDED	1 x 8-CH NVR 6 x 4MP FIXED TURRET 2TB HDD INCLUDED

DVR KIT

R2-HD8C5MPK	R2-HD16C5MPK
	
1 x 8-CH DVR 6 x 5MP FIXED EYEBALL 2TB HDD INCLUDED	1 x 16-CH DVR 12 x 5MP FIXED EYEBALL 2TB HDD INCLUDED

SPECIAL ORDER

Multi-Sensor

Coming Soon

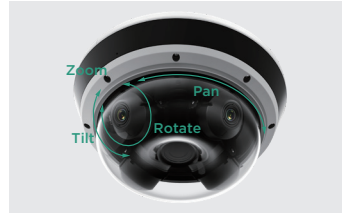


Edge AI
Built-in Mic

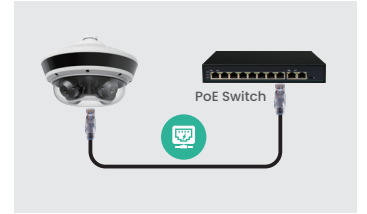
4 + 1 (stitching)



4 Adjustable Sensors



Single IP Address



R2-4X5MPMTRZ

4x5MP 2.7-13.5mm
Multi-directional IP Dome

Fisheye

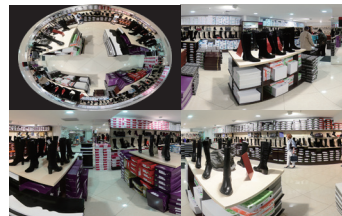


Edge AI
Built-in Mic

360° Panoramic



On-board Dewarping



Heat Map



R2-12MPFISH

12MP 1.8mm IP Fisheye

Dual-Lens



Edge AI
Dual Light
Built-in Mic & Speaker

On-board Stitching

180°4K wide view



Smart Dual Light

Full color night vision



Built-in MIC and Speaker



Speaker Coverage
60m (200 ft)

45-48dB
Environment

R2-8MPWDANGL

8MP Dual-lens IP Bullet

Pinhole



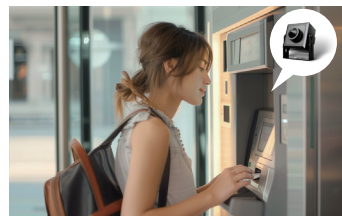
R2-2MPINCAM

2MP 3.7mm IP Pinhole

Built-in SD Card



Compact & Covert



True WDR



SPECIAL ORDER (CONT.)

7" PTZ



R2-5MPIRPTZ

7" 5MP 30X
IR IP PTZ with wiper

5" PTZ



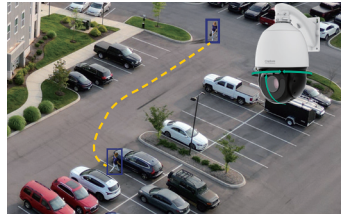
R2-2MPIRPTZ

5" 2MP 25X
IR IP PTZ

Fast & Accurate



Intelligent Tracking



Smoke & Flame



3" PTZ



R2-5MPSPDME

3" 5MP 5X
Active Deterrence IP PTZ

Active Deterrence

Sound and light alarm (red and blue lights)



Built-in MIC and Speaker



Integrated Bracket

Simple switching between wall mounted/lifting



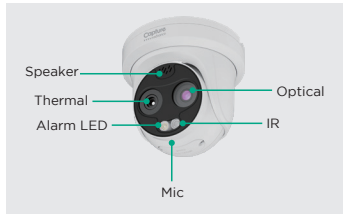
Thermal Bi-Spectrum



R2-THRMLTRT

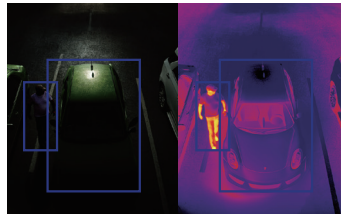
256 x 192 3.5mm IP Bi-spectrum
Thermal Turret

All-in-one



AI Functions

Human/Vehicle



Advanced Intelligence

Smoking/Smoke&Flame/Fire Spot



Thermal Bullet



R2-THRMLBL1

400 x 300 8mm IP Bullet Thermal

R2-THRMLBL2

400 x 300 15mm IP Bullet Thermal

R2-THRMLBL3

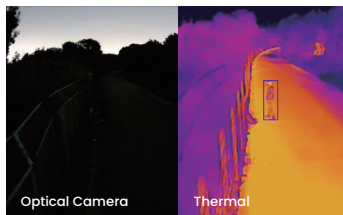
400 x 300 19mm IP Bullet Thermal

R2-THRMLBL4

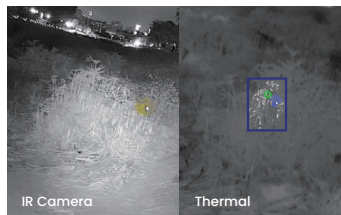
400 x 300 35mm IP Bullet Thermal

Long-range Perimeter

Sharp image without light source



Discover Hidden Targets



Area/Line/Point Temp. Measurement

-20°C-150°C (-4°F-302°F)
±2°C (±3.6 °F) / ±2%
Temp. threshold/difference/rising alarm



CONVENIENCE MEETS AFFORDABILITY

Intelligent Perimeter

Only applicable for some models



Audio Over Coax (Coming Soon)

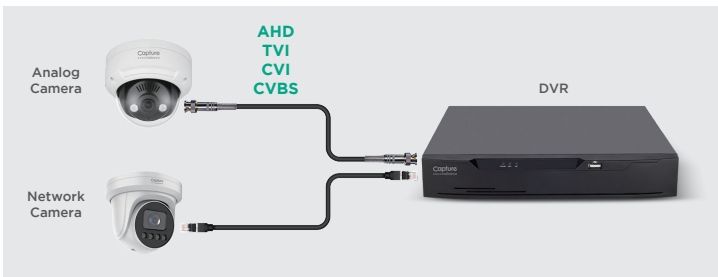
Only applicable for some models



Tamper Alarm



5 in 1



Easy Management



Full Channel Intelligent Monitoring



HD Video and Audio



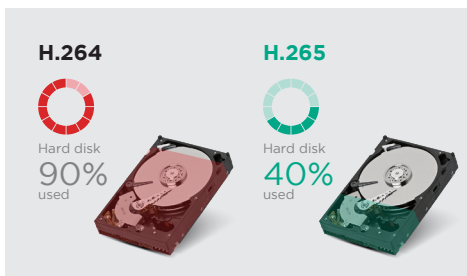
Cloud Service



Cost Savings



Smart Encoding for H.264/H.265



Remote Monitoring



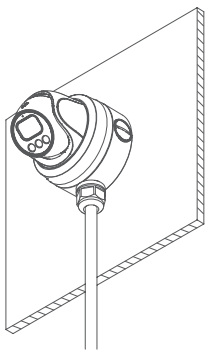
CAMERA TO MOUNT CORRELATION



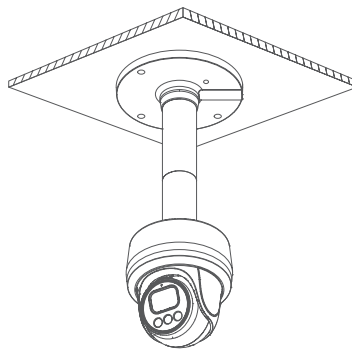
MODEL(S)	CAPTURE ADVANCE ACCESSORIES	R2-8MPFXTUR R2-5MPFXTUR R2-IP4MPFLCR R2-IP4MPFLKT	R2-5MPTRMTRZ	R2-8MPFXDOME R2-5MPFXDOME R2-HD5MPDME	R2-5MPDMTRZ R2-HD5MPMODM	R2-8MPFXBUL R2-5MPFXBUL R2-5MPBLMTRZ R2-HD5MPBLT R2-HD5MPMOBT	R2-HD2MPEYE R2-HD5MPEYE	R2-HD5MPMOEY R2-HD2MPMOEY	R2-HD2MPBUL	R2-HD2MPBUL2
ITEM #										
	R2-JNCBX646C Junction Box (waterproof)									•
	R2-JNCBX319 Junction Box (waterproof)								•	•
	R2-JNCBX361 Junction Box							•		
	R2-JNCBX645D Junction Box (waterproof w/ camera)		•							
	R2-JNCBX646M Junction Box (waterproof w/ camera)		•							
	R2-JNCBX656 Junction Box (waterproof w/ camera)			•						
	R2-JNCBX656A Junction Box (waterproof w/ camera)					•	•			
	R2-JNCBX657 Junction Box (waterproof w/ camera)				•					
	R2-PNDCP201 Pendant Cap				•					
	R2-PNDCP201A Pendant Cap							•		
	R2-PNDCP202 Pendant Cap			•						
	R2-PNDCP203 Pendant Cap		•							
	R2-PNDCP205 Pendant Cap						•			
	R2-PNDCP206 Pendant Cap		•							
R2-PNDMT402 Pendant Mount										
R2-PNDMT403 Pendant Mount										
R2-WMT501 Wall Mount										
R2-WMT502 Wall Mount w/ Back Box										

INSTALLATION EXAMPLE

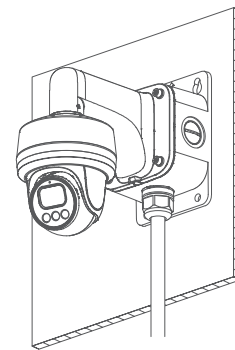
Pendant Mount



Pendant Mount + Pendant Cap



Wall Mount + Pendant Cap



Visit Capture Advance Online

For Capture Advance tech support, please contact:
info@captureadvtech.com or
 call 833-553-7060/800-583-6470

For more information about Capture Cloud,
 please refer to the **Eagle Eye User Guide** or
 call 512-301-9710